

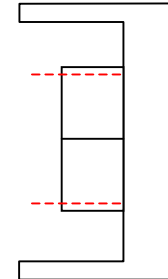
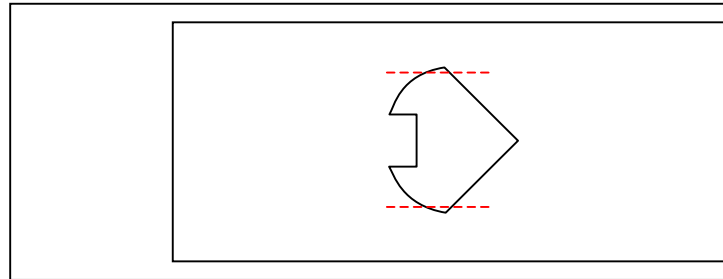
Kadee #78 to #158/156 Conversion

The Kadee #78 coupler used by Rail Yard Models kits is in the process of being discontinued by Kadee. In the event you are unable to locate a set of #78 couplers to use for your kit, it is possible to modify the draft gear castings to work with the Kadee #158 whisker couplers.

Rail Yard Models Kits 101 & 112 should use long shank #156 whisker couplers.

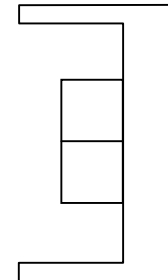
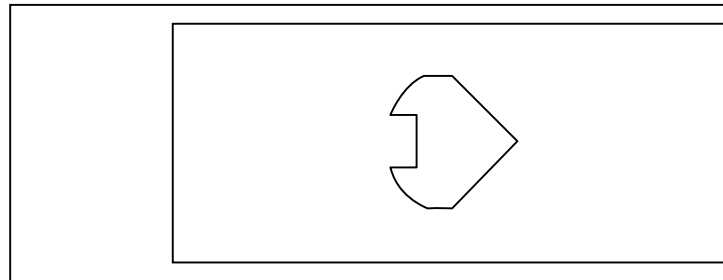
Typical Rail Yard Models #78 compatible draft gear casting.

Trim points off sides of centering boss as shown by the red dotted lines.



Centering boss after trimming off points.

Be sure to trim the points cleanly to the bottom of the draft gear box.



Install #158 coupler over centering boss, ensuring the whiskers fit between the side walls of the draft gear box.

